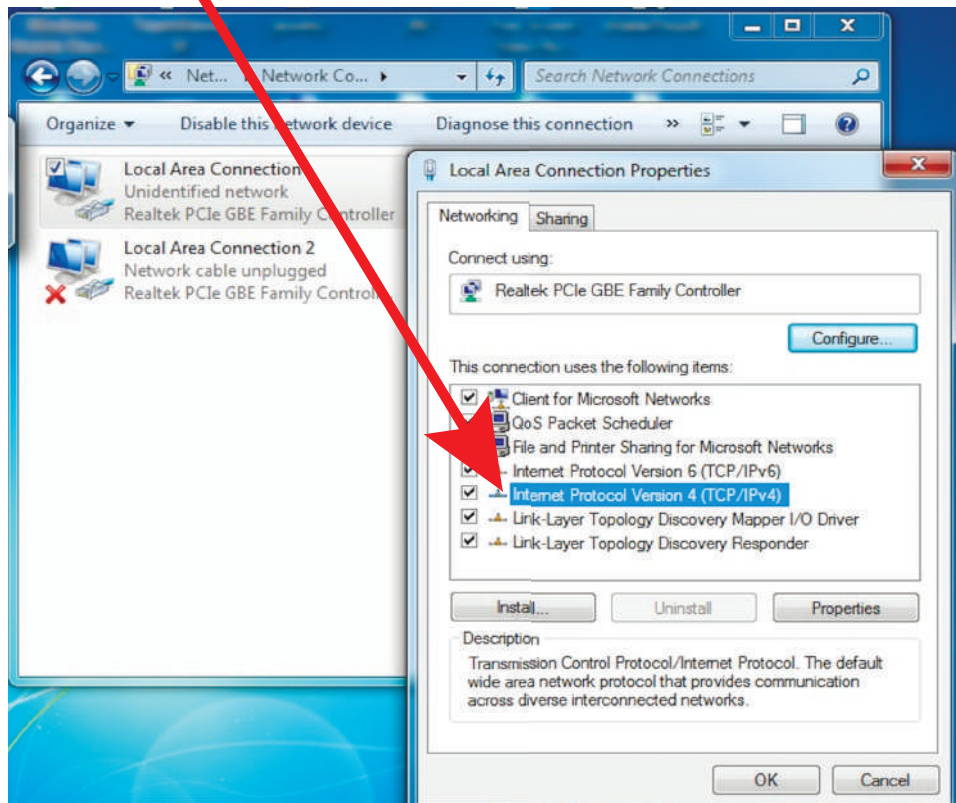


Setting / changing TCP/IP device settings

Before installing, changing the device parameters, make the following network settings.

Internet Protocol Version 4 (TCP/IPv4) - double click.



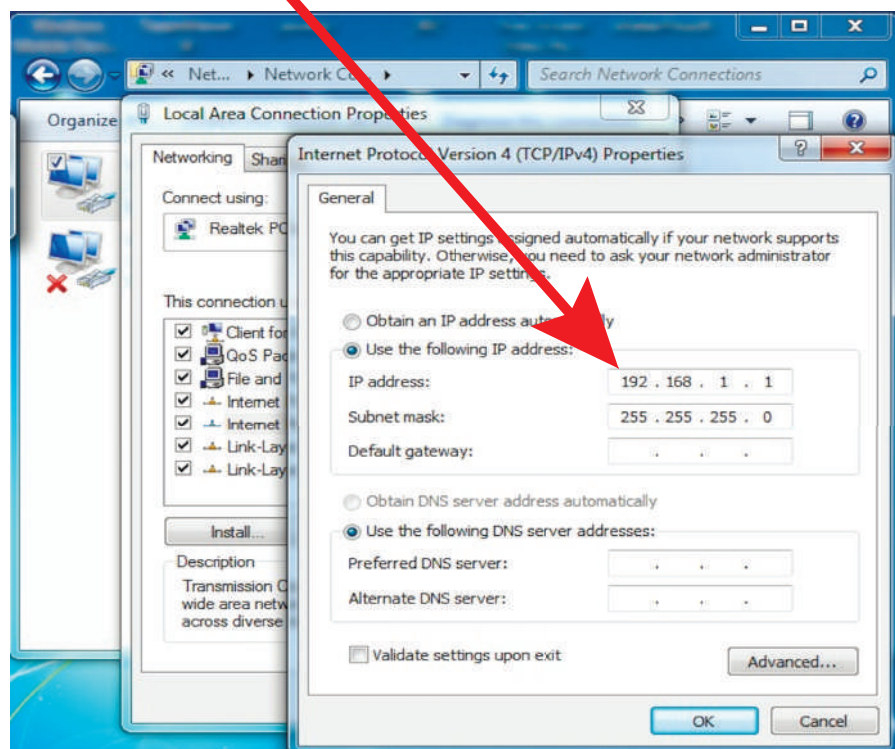
Set up:

- Use the following IP address:

192.168.1.1

255.255.255.0

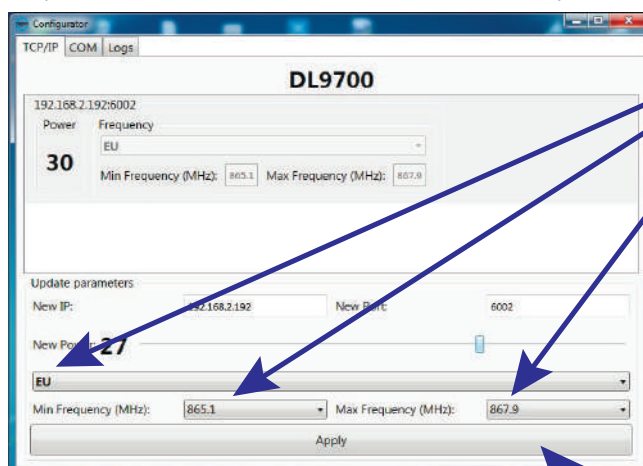
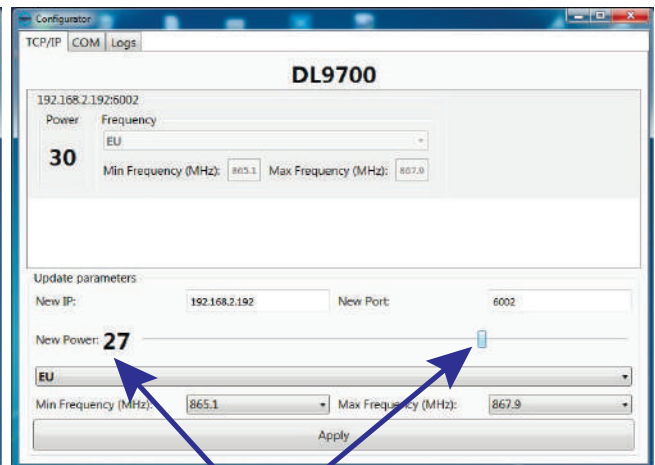
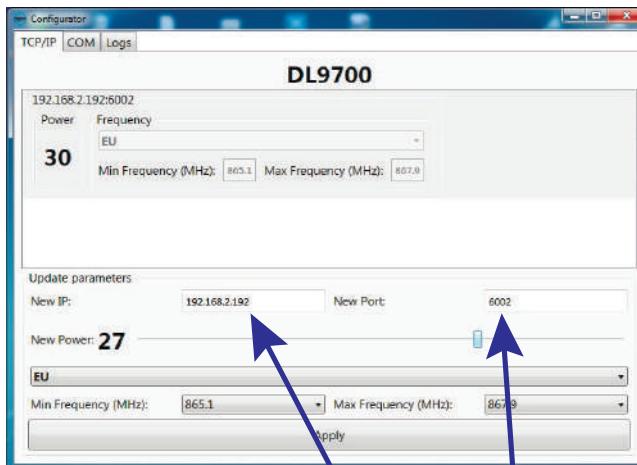
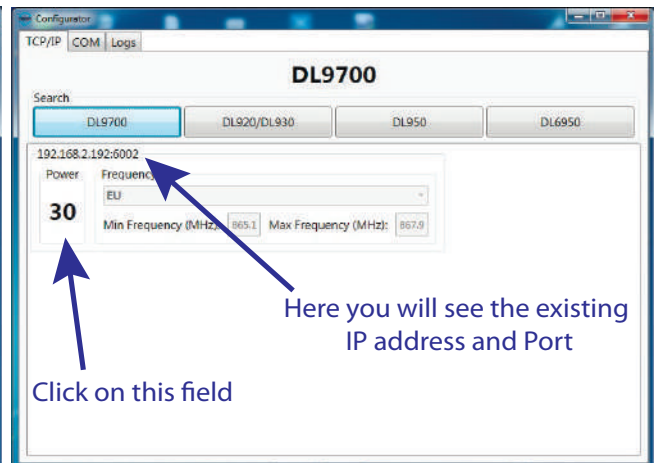
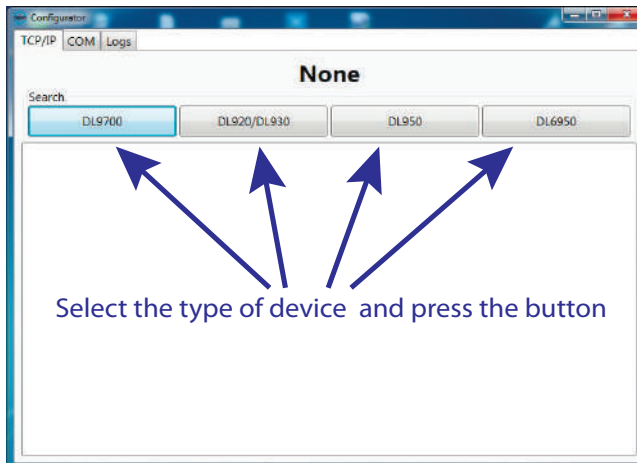
- Use the following DNS server addresses (just mark)



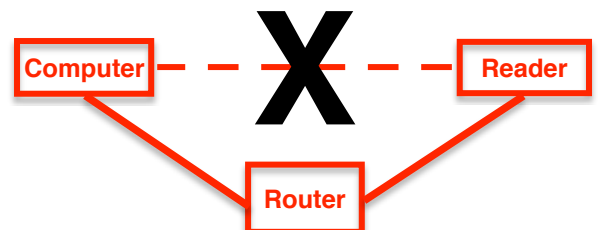
Use the connection interface depending on the type of reader.
TCP / IP or RS232. You can use an adapter depending on your computer.
You may need to install additional third-party software.

Configuring a TCP / IP device

If you configure the IP address and port, the reader must be connected to the computer through the router only



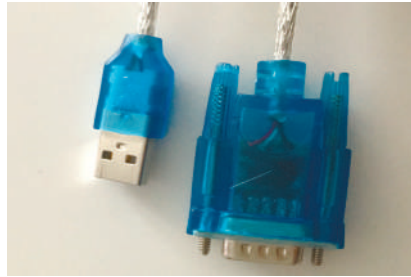
If you configure the IP address and port, the reader must be connected to the computer through the router only



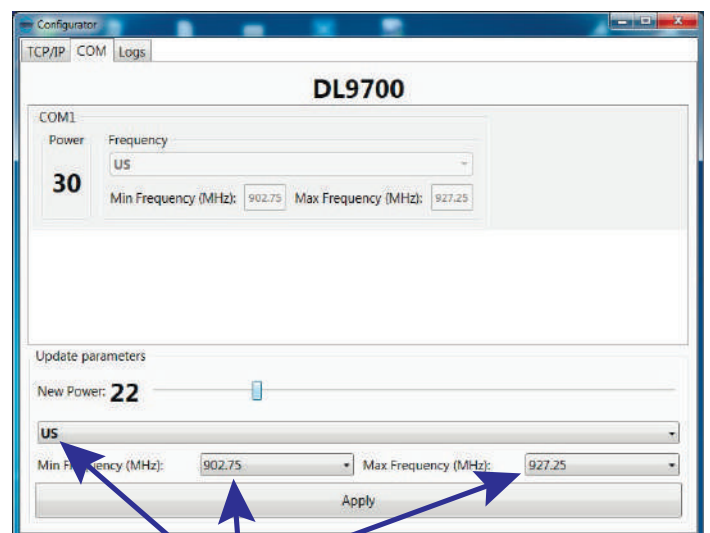
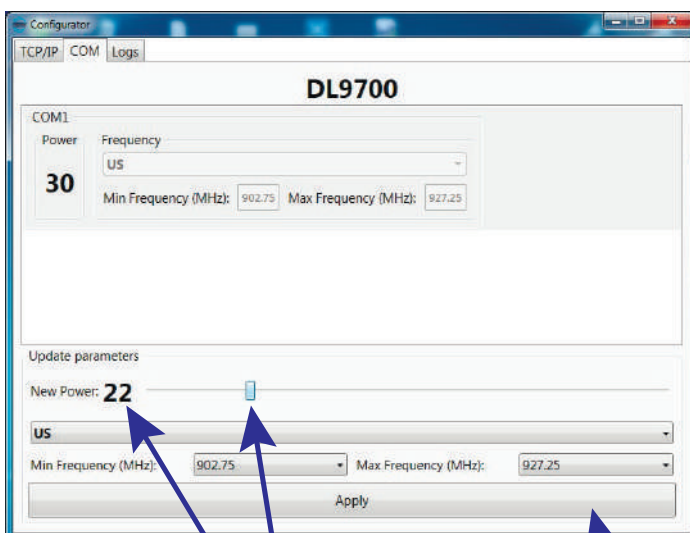
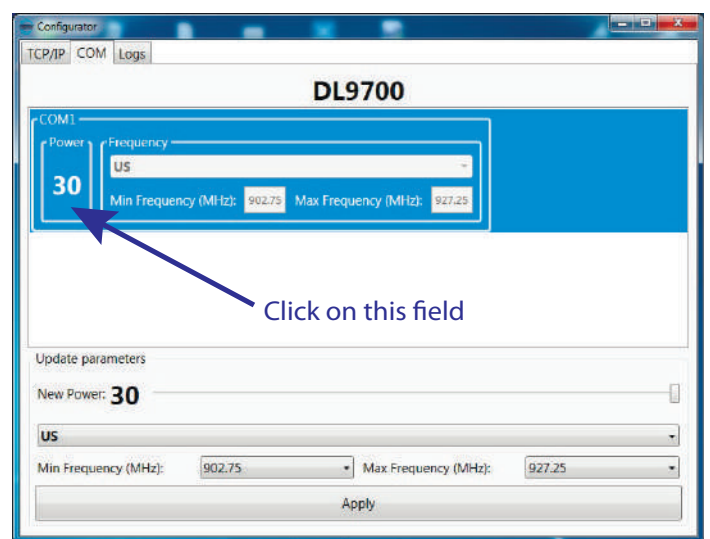
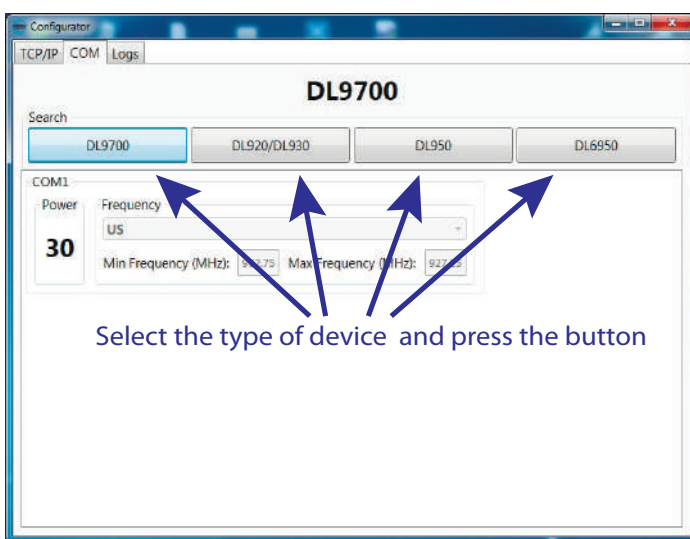
At the end of all settings, click **Apply!**

Use the connection interface depending on the type of reader.
TCP / IP or RS232. You can use an adapter depending on your computer.
You may need to install additional third-party software.

For example: USB - RS232



Configuring a RS232 (com) device



At the end of all settings, click **Apply**!

You can use the connection via com RS232 or TCP / IP connection, if available.

Left window (Desktop reader):

- Name: Desktop reader
- Reader type: DL9700
- Connection type: ☐ Using TCP/IP ☒ Using COM port
- IP address: Port: 3
- Power: Interval: 0
- Turn on automatically for:
 - ☒ binding
 - ☒ input
 - ☒ output
 - ☒ antitheft
 - ☐ safe
- Buttons: Save, Delete
- Status: All parameters are set correct

Right window (Main entrance):

- Name: Main entrance
- Reader type: DL920 ☒ Buzzer
- Connection type: ☒ Using TCP/IP ☐ Using COM port
- IP address: 192.168.1.192 Port: 6002
- Power: Interval: 0
- Turn on automatically for:
 - ☒ binding
 - ☒ input
 - ☒ output
 - ☒ antitheft
 - ☐ safe
- Buttons: Save, Delete
- Status: All parameters are set correct

Set up the reader type (depends on the model of the reader)

Left window (Desktop reader):

- Name: Desktop reader
- Reader type: DL9700
- Connection type: ☐ Using TCP/IP ☒ Using COM port
- IP address: Port: 3
- Power: Interval: 0
- Turn on automatically for:
 - ☒ binding
 - ☒ input
 - ☒ output
 - ☒ antitheft
 - ☐ safe
- Buttons: Save, Delete
- Status: All parameters are set correct

Right window (Main entrance):

- Name: Main entrance
- Reader type: DL920 ☒ Buzzer
- Connection type: ☒ Using TCP/IP ☐ Using COM port
- IP address: 192.168.1.192 Port: 6002
- Power: Interval: 0
- Turn on automatically for:
 - ☒ binding
 - ☒ input
 - ☒ output
 - ☒ antitheft
 - ☐ safe
- Buttons: Save, Delete
- Status: All parameters are set correct